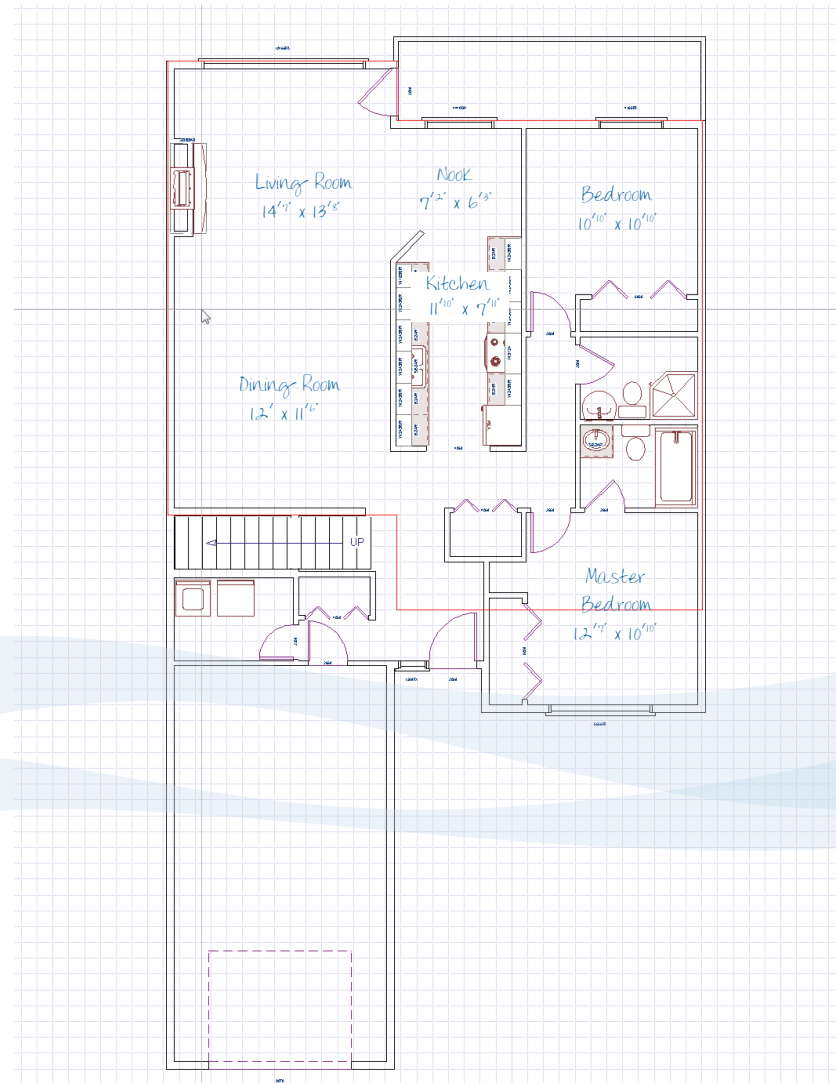
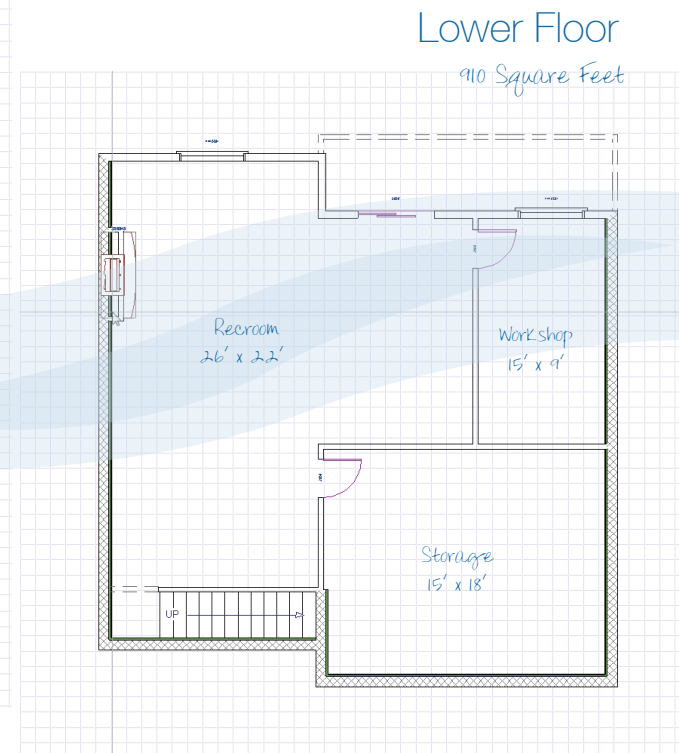


# Floorplans



Main Floor  
1172 Square Feet



Lower Floor  
910 Square Feet

# Specifications

- Address • 5995 Waterton Place
- Age • 20
- Total Area • 2,083 sq.ft.
- Finished Area • 1,803 sq.ft.
- Beds & Baths • 2 & 2 with one ensuite
- Parking • Super Single

- Water • Connected to Municipal
- Sewer • Connected to Municipal
- Taxes • \$2198.40 (for 2011)

- Exterior • Vinyl Siding
- Roof • Fiberglass Shingle
- Heating • Electric Baseboard
- Fireplaces • Two Natural Gas

- Additional Features • Central Location
- Easy Access
- Low Maintenance Yard
- Shopping Nearby
- Quiet Area, Cul-de-sac
- Pets allowed

Data, floorplans, and measurements are approximate. Please verify if important.



Coast Realty GROUP  
 Phone • (250) 758-7653  
 Toll Free • (800) 779-4966  
 Facsimile • (250) 758-8477  
 Email • janandtom@janandtom.com  
 4200 Island Highway, Nanaimo, BC, V9T 1W6  
 Each office independently owned and operated



www.janandtom.com



(250) 758-7653

5995 Waterton Place

Over 2,000 square feet await you in this rare two level townhome featuring an oversized recroom and workshop.

# Immaculate Level Entry Townhome



We never forget you have a choice



#247-2465 Apollo Drive • \$64,900



# Jan and Tom.com

We never forget you have a choice



Nestled at the end of a quiet cul-de-sac in popular 55+ pet friendly Schooner Bay Manor park is this renovated 2 bedroom/1 bathroom home. The spacious open plan features a bright eat-in kitchen that has been remodelled with new laminate flooring, gas range, dishwasher and a beautiful glass tiled backsplash. Adjacent to the kitchen is a unique pantry/laundry room complete with extra storage, a baking centre and new Maytag Neptune stacking washer/dryer. The living room area is large with multiple windows and boasts a corner gas fireplace surrounded by new slate tile to warm those cool winter evenings. The bright master bedroom features French doors opening onto a beautiful deck overlooking the back yard and greenspace across the street...a wonderful, private area to enjoy your morning coffee. There's also an oversized guest bedroom with plenty of room for a computer area as well as a place for overnight guests. The bath has been completely remodeled with a spa feel.

Janice & Tom Stromar

