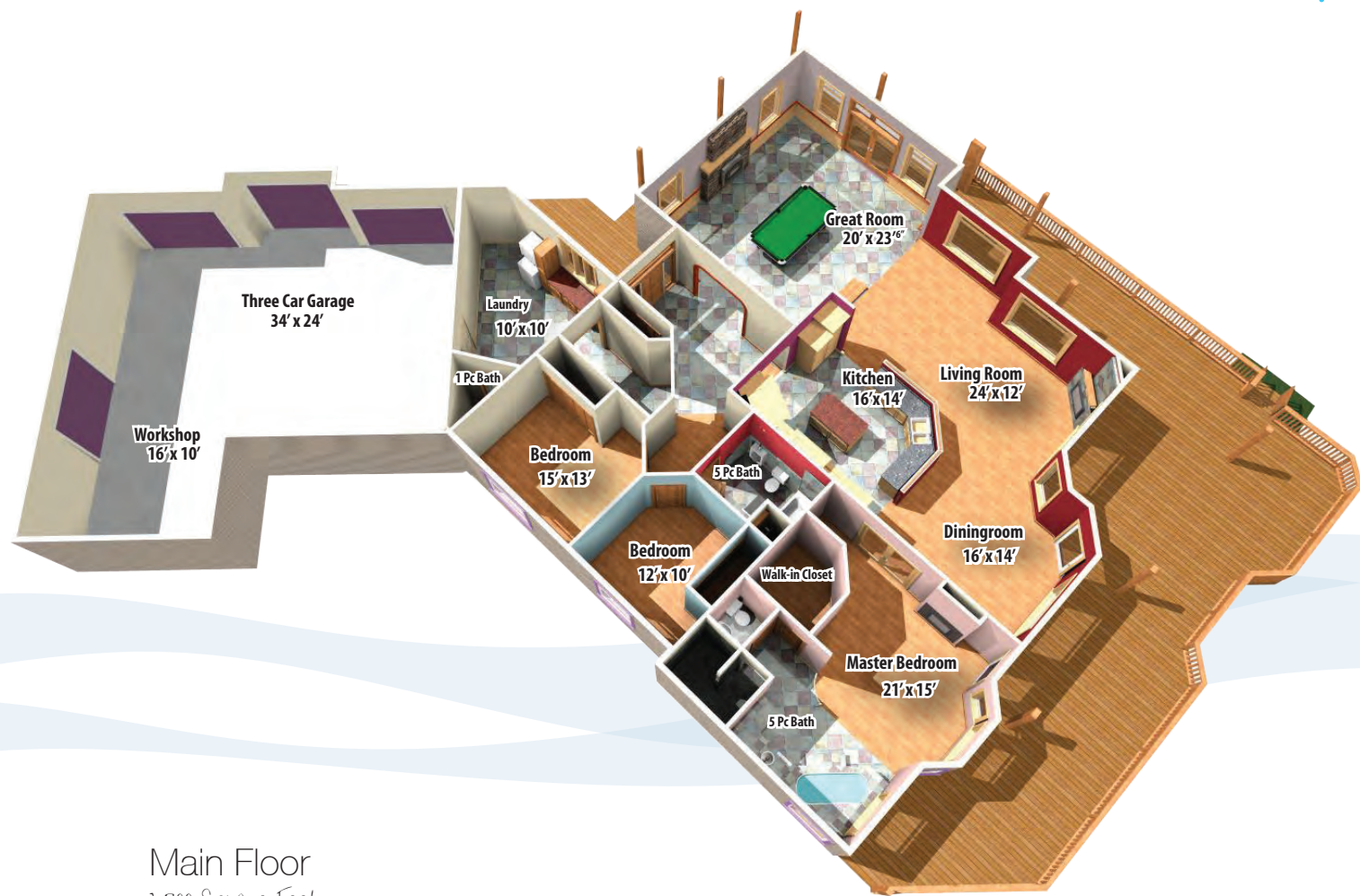


Floorplans



Main Floor
2,700 Square Feet

Specifications

- Address • 3000 Maple View Drive
- Total Area • 2,700 sq.ft.
- Beds & Baths • 3 & 3
- Parking • Triple Garage
- Built • 2006
- Water • Well
- Sewer • Septic
- Taxes • \$3,850 (for 2013)
- Lot Size • 3.06 acres
 - Landscaped (1 ac)
 - Deer proof garden area

- Exterior • Hardi-Plank / Asphalt Shingle
- Construction • Wood frame
- Heating • Electric Heat-pump & hydronic in-floor heating

- Additional Features • Private Setting
- Quiet Area
- Six burner cooktop
- Vaulted Ceilings
- Main Level Entry
- Landscaped
- No Thru Road
- Workshop w/ 220v
- Prewired for Sound System
- Built-in Vac
- Solid Wood Interior Doors
- Granite Counters
- Custom Cabinetry
- Pot Filler / Warming Oven
- Multi-head shower
- 1800 sq. ft. Deck

• And many, many, many more....!

Data, floorplans, and measurements are approximate. Please verify if important.



Coast Realty GROUP
 Phone • (250) 758-7653
 Toll Free • (800) 779-4966
 Facsimile • (250) 758-8477
 Email • janandtom@janandtom.com
 4200 Island Highway, Nanaimo, BC, V9T 1W6



www.janandtom.com



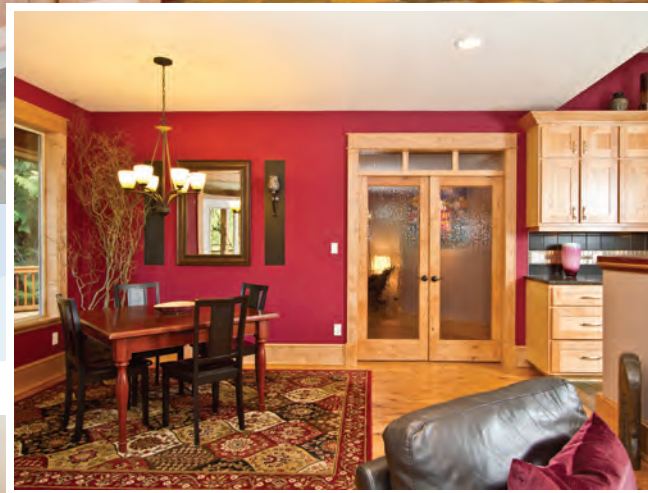
(250) 758-7653

3000 Maple View Drive

This exclusive home is perfect for entertaining and features custom finishing touches throughout

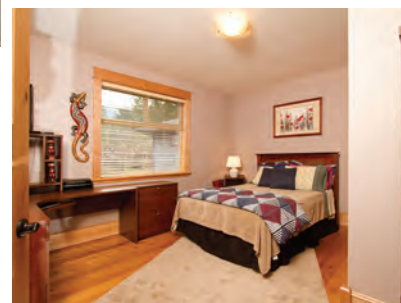
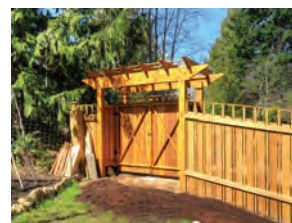


We never forget you have a choice



& Jan and Tom .com

We never forget you have a choice



This very private 3 acre estate boasting a sprawling 2700 sq. ft. rancher with a triple overheight garage & 1800 sq. ft. wrap around cedar deck is the perfect place to entertain family & friends. This wonderful home was custom built by the current owners to the highest standards with no expense spared. Upon entering the home, you will immediately be impressed. Everywhere you look, you will see oversized windows that bring the outdoors in & wood, including solid alder interior doors, alder wide plank flooring, western maple baseboards & window surrounds & purpleheart trim throughout. The great room, currently being used as a billiard room, is magnificent featuring a 16 ft inverted hip vaulted ceiling, western maple wainscoting, custom designed open wet bar & an amazing floor-to-ceiling natural stone wood burning fireplace with timber mantle. If you love to cook, this is the kitchen you dream about, featuring custom maple cabinetry, granite countertops, butcher block island & high end stainless steel appliances including a 6 burner cooktop with a pot filler & warming oven. The master bedroom feels like a suite at a high end resort. Entering through the custom built French doors, you will immediately picture quiet evenings relaxing in the large corner soaker tub overlooking the garden area or afternoons lounging in front of the fireplace with a good book. Other features of this room are a large walk-in closet, separate toilet room & custom built multi-head walk-in shower with adjoining towel off area. Completing the home are two more large bedrooms, family room with corner fireplace, 5-piece main bath & over-sized laundry room. The gardener in the family will appreciate the huge "deer proof" garden area with raised beds, perfect for growing your own vegetables. The landscaped lawns are expansive & surrounded by trees to ensure absolute privacy. There are too many other features to list. Call us to make an appointment to view this spectacular home before it is gone.

Janice & Tom Stromar